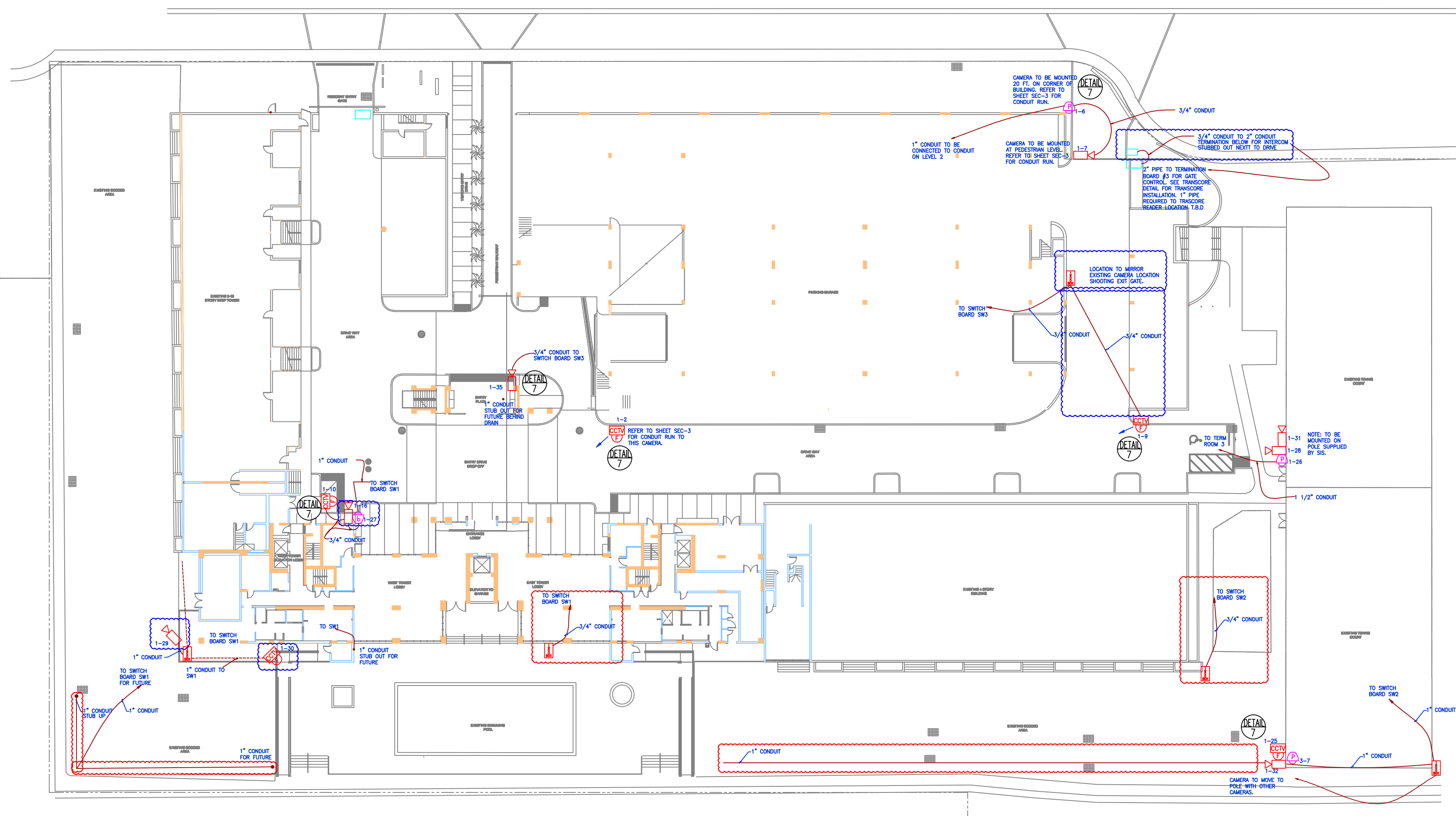


SITE PLAN -SECURITY
SCALE: 1/16" = 10'

LEGEND

18/2 CAT6		FIXED CCD DOME CAMERA, OUTDOOR
18/2 CAT6		FIXED CCD DOME CAMERA, INDOOR
18/2 CAT6		ANALYTICAL PAN/TILT/ZOOM CAMERA
18/2 CAT6		ANALYTICAL FIXED CAMERA
18/6 22/8 22/4		CARD READER
18/4		INTERCOM
22/4		DOOR CONTACT
22/8		PANIC INTERCOM

SEE SHEET SEC-9 FOR DETAILS



ENTRANCE -SECURITY
SCALE: 1/8" = 10'

NOTE:
1. ALL CAMERAS TO BE CONNECTED BY CAT6 AND 18-2. UP TO 2 CAMERAS CAN BE LOOPED IN A 1" PIPE.
2. ACCESS CONTROL MAXIMUM 2 DOOR ON A 1" CONDUIT, 1 DOOR ON A 3/4" CONDUIT
3. TERM BOARD AND SWITCH LOCATIONS TO RECOGNIZE TEMPERATURE RANGE OF 32 DEG. TO 113 DEG. F. SEE EQUIPMENT SPECS.
4. ALL PIPE TO BE FREE AND CLEAR OF ALL DEBRIS, WITH PULL STRINGS PROVIDED.

DRAWING NOTES :
PER NFPA 101
1. A SENSOR SHALL BE PROVIDED ON THE EGRESS SIDE, ARRANGED TO DETECT AN OCCUPANT APPROACHING DOORS THAT ARE ARRANGED TO UNLOCK IN THE DIRECTION OF EGRESS UPON DETECTION OF AN APPROACHING OCCUPANT OR LOSS OF POWER TO THE SENSOR.
2. LOSS OF POWER TO THE PART OF THE ACCESS CONTROL SYSTEM THAT LOCKS THE DOORS SHALL AUTOMATICALLY UNLOCK THE DOORS IN THE DIRECTION OF EGRESS.
3. THE DOORS SHALL BE ARRANGED TO UNLOCK IN THE DIRECTION OF EGRESS FROM A MANUAL RELEASE DEVICE LOCATED 40 IN. TO 48 IN. VERTICALLY ABOVE THE FLOOR AND WITHIN 60 IN. OF THE SECURED DOORS.
4. THE MANUAL RELEASE DEVICE SHALL BE READILY ACCESSIBLE AND CLEARLY IDENTIFIED BY THE FOLLOWING : "PUSH TO EXIT".
5. WHEN OPERATED, THE MANUAL RELEASE DEVICE SHALL RESOLVE IN DIRECT INTERRUPTION OF POWER TO THE LOCK INDEPENDENT OF THE ACCESS SYSTEM ELECTRONICS AND THE DOORS SHALL REMAIN UNLOCKED FOR NOT LESS THAN 30 SECONDS.
6. ACTIVATION OF THE BUILDING FIRE PROTECTIVE SIGNALLING SYSTEM SHALL AUTOMATICALLY UNLOCK THE DOORS IN THE DIRECTION OF EGRESS, AND THE DOORS SHALL REMAIN UNLOCKED UNTIL THE FIRE PROTECTIVE SIGNALLING SYSTEM HAS BEEN MANUALLY RESET.
7. ACTIVATION OF THE BUILDING AUTOMATIC SPRINKLER OF FIRE DETECTION SYSTEM SHALL AUTOMATICALLY UNLOCK THE DOORS IN THE DIRECTION OF EGRESS AND THE DOORS SHALL REMAIN UNLOCKED UNTIL THE FIRE PROTECTIVE SIGNALLING SYSTEM HAS BEEN MANUALLY RESET.

RED CLOUDED AREAS CAN BE COMPLETELY EXCLUDED FROM PLAN, AND ARE NOT NECESSARY.
 ADD NEW

SITE PLAN -SECURITY
SCALE: 1/32" = 10'

REVISIONS

- 03/11/2010.
- 03/26/2010.
- 04/07/2010.
- 04/21/2010.
- 04/29/2010.
- 05/17/2010.

1000 VENETIAN WAY RENOVATIONS
1000 VENETIAN WAY
MIAMI, FLORIDA

DRAWING TYPE

SECURITY PLAN

SEAL

Security Innovative Solutions, Inc.
PHONE# (954) 358-0799
FAX# (954) 583-1853
3921 S.W. 47th Avenue, Suite 1009,
DAVIE, FLORIDA 33314
STATE CERTIFIED EF-20000882

SIS

This material is the property of Security Innovative Solutions, Inc. and is loaned to you for your use only. It is not to be disclosed or transmitted to other parties nor copied in any form without the prior written consent of Security Innovative Solutions, Inc.

DATE: 02/10/10

APPROVED BY R.H.

SCALE: 1/32" = 10'

DRAWN BY S.V.

CHECKED BY M.G.

SHEET **SEC - 1**